



LEAD Everyday

Leadership Development
for the Moments That Matter



Overview

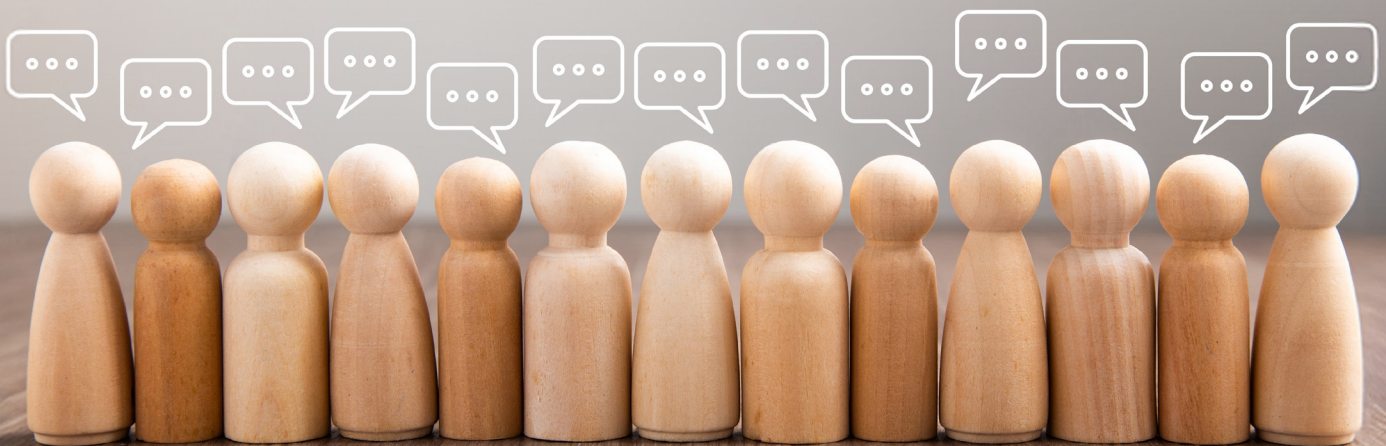
In today's dynamic and complex business environment, leadership effectiveness is shaped not only by strategic decisions but by the quality of everyday interactions. Leaders continuously engage in conversations that influence performance, alignment, engagement, and execution.

LEADEveryday is NIIT's proprietary leadership development solution designed to strengthen leadership capability through everyday leadership conversations. The solution combines behavioral leadership framework, experiential practice, and AI-enabled reinforcement to help leaders apply effective leadership behaviors in real workplace situations.

Unlike traditional leadership programs that emphasize theoretical knowledge or isolated training events, LEADEveryday focuses on the practical application of leadership behaviors that occur daily in organizations.

At its core, LEADEveryday recognizes that **leadership is expressed through conversations** - the moments where leaders clarify expectations, coach team members, review progress, challenge performance, and provide direction.

By equipping leaders with a structured framework and opportunities for repeated practice, LEADEveryday enables organizations to build consistent leadership capability at scale.



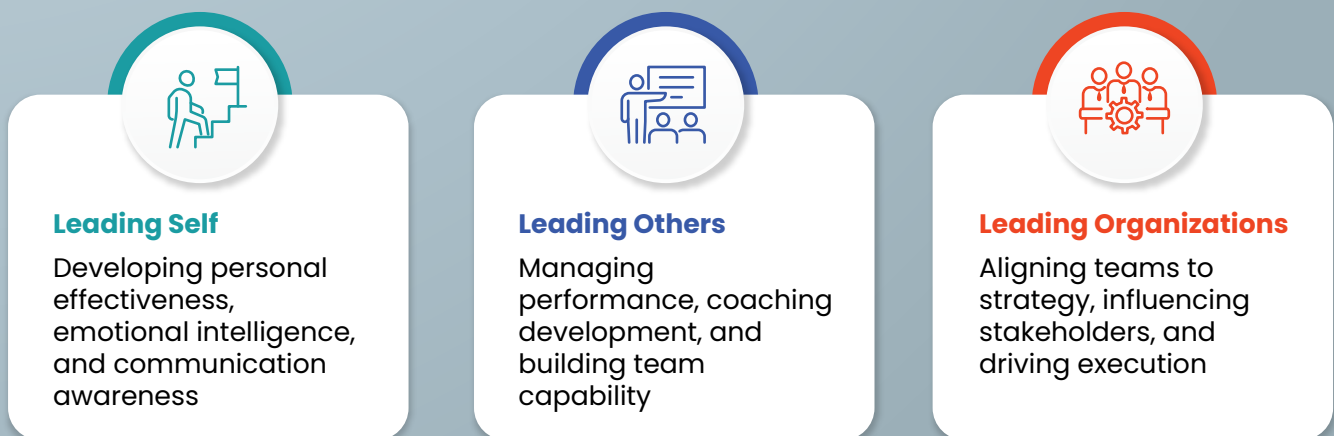
The LEADEveryday Framework

The LEADEveryday solution is built around the **Five Conversation Styles framework**, a structured leadership model that defines five core leadership interactions leaders use in daily work. These conversation styles include:



This framework translates leadership into observable, repeatable behaviors that leaders can apply immediately in real situations. By adopting a shared conversation-based leadership language, organizations can improve communication clarity, accountability, and alignment across teams.

The framework supports leadership development across multiple leadership dimensions, including:



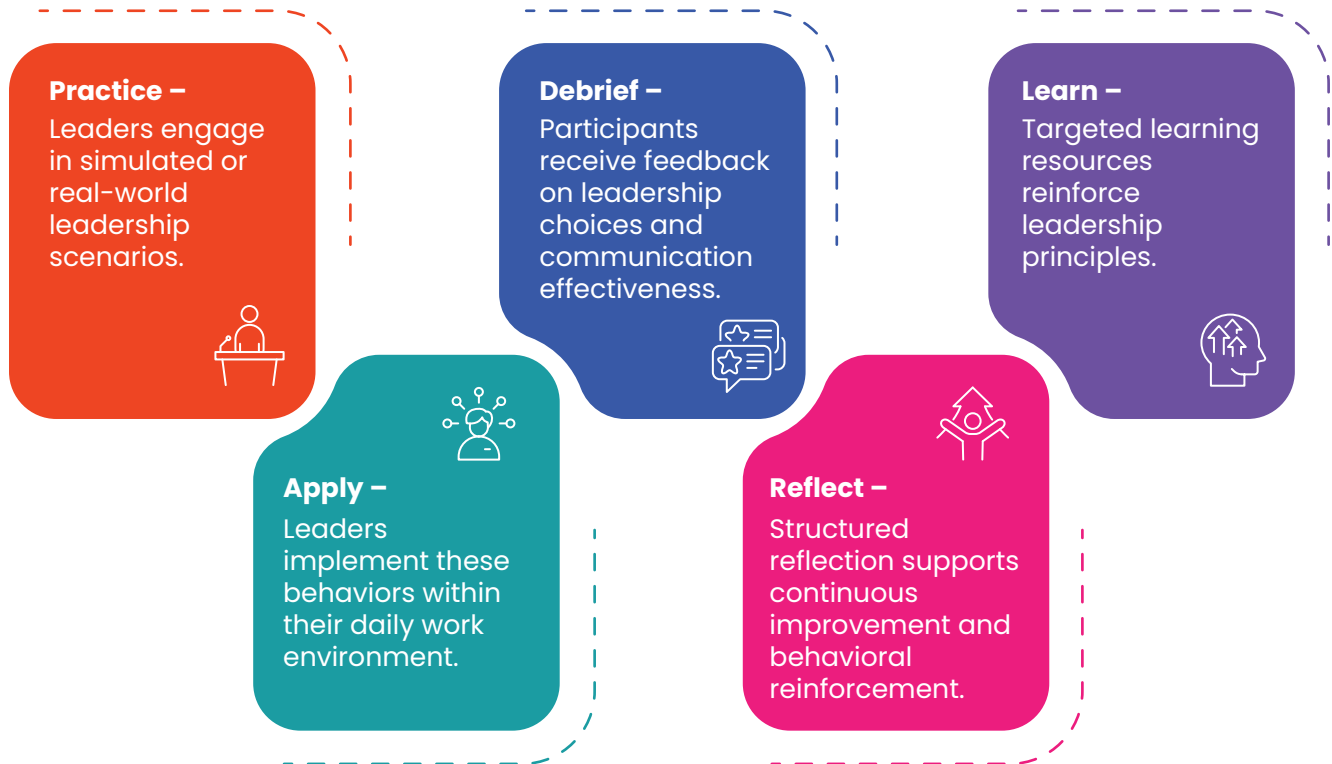
These dimensions ensure that leadership capability evolves as leaders progress from emerging leadership roles to senior leadership responsibilities.

Practice-Based Leadership Development

LEAD Everyday emphasizes a **practice-first learning methodology** designed to accelerate behavioral change.

Rather than starting with theoretical instruction, the program engages leaders in practical scenarios that mirror real leadership challenges. Through repeated practice and feedback, leaders strengthen their ability to apply leadership behaviors in everyday situations.

The learning cycle includes five key elements:



This experiential approach ensures leadership capability develops through repeated application rather than passive learning.



AI-Enabled Leadership Support

LEAD Everyday integrates artificial intelligence to support personalized leadership development and scalable reinforcement.

AI-enabled capabilities within the solution include:

 <p>Adaptive Practice Engine</p> <p>Generates practice scenarios tailored to leadership level, role, and performance.</p>	 <p>Critical Mistake Detection</p> <p>Identifies patterns in leadership decisions and highlights areas where additional development is required.</p>	 <p>AI-Triggered Coaching Recommendations</p> <p>When patterns suggest additional support is needed, the system recommends facilitator or coaching intervention.</p>
---	--	--

These capabilities enable organizations to provide individualized leadership development while maintaining consistency across large leadership populations.

Leadership Development Across Career Stages

LEAD Everyday supports leaders at different stages of their leadership journey through structured development pathways.



Across all pathways, leaders apply the same underlying framework, ensuring a consistent leadership language across the enterprise while tailoring scenarios and development activities to each leadership level.

Leadership Development Embedded in the Flow of Work

LEAD Everyday is designed as a structured leadership program rather than a standalone training event. The program combines AI-enabled practice, facilitator-led sessions, and continuous reinforcement to ensure leadership behaviors are sustained over time.

Participants typically engage in a weekly development rhythm that includes:

- ✓ Coaching or reflection sessions
- ✓ Real-world leadership practice scenarios
- ✓ Simulation-based practice
- ✓ Structured feedback and planning

By integrating learning with real leadership situations, the program ensures that leadership development remains directly connected to the challenges leaders face in their everyday work environment.



 @niitmts

 /company/1029832



NIIT

© NIIT, 2026
All rights reserved.

ATLANTA | BENGALURU | BERGEN | CHICAGO | DALLAS | DEBRECEN | DUBLIN | GURUGRAM | LEIPZIG | LONDON |
MALAGA | MUNICH | ROCHESTER | SAN JOSÉ | SHANGHAI | SHEFFIELD | ST. CHARLES | TOULOUSE | VANCOUVER

For questions or comments, please write to businessimpact@niit.com.

www.niitmts.com